

## Woodleigh Road back to 2-way

Written by A. Cyclist

Monday, 24 January 2022 22:32 -

---



Without warning or consultation, the New Street end of Woodleigh Road is back to 2-way.

According to a nearby resident, contractors turned up at 11pm last Wednesday (19th January - just a few hours after Boris had announced abandonment of 'Plan B') with 3 vehicles and floodlighting to burn off the markings installed in September 2020 as part of the [Covid-19 Active Travel measures](#)

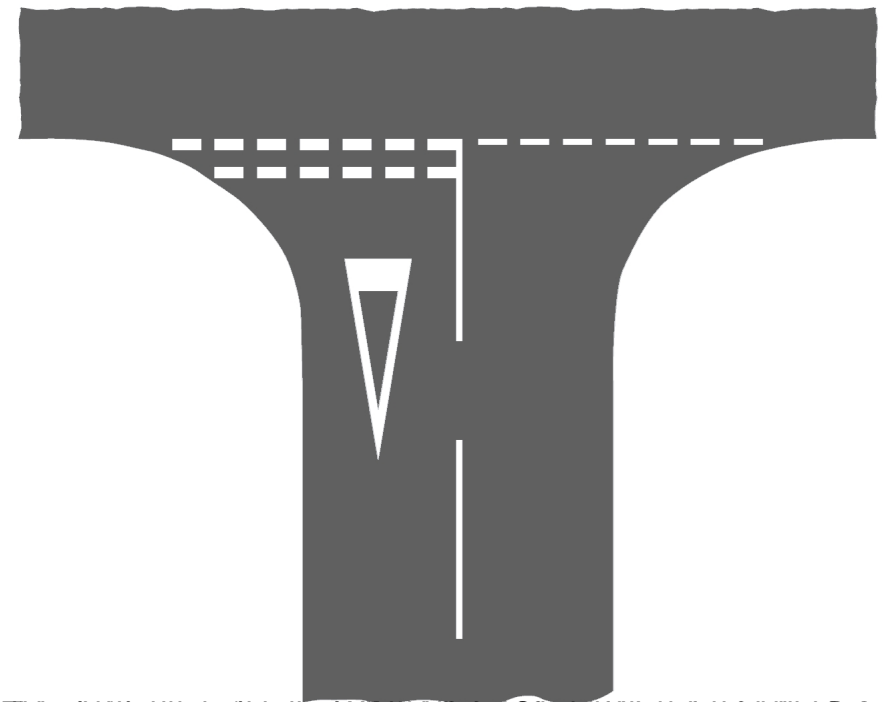
. The left side of this very narrow section of Woodleigh Road had been delineated as a 'footpath' and the 'Weak Bridge' notice covered with a 'No Entry' sign, with an exception for cyclists (who shared the delineated area with pedestrians). The white 'Give Way' triangle and other markings were repainted at the same time.

## Woodleigh Road back to 2-way

Written by A. Cyclist

Monday, 24 January 2022 22:32 -

---

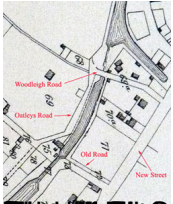


The junction was a T-junction with the vertical road being the main road. The horizontal road was a dead-end road. The junction was a T-junction with the vertical road being the main road. The horizontal road was a dead-end road.

## Woodleigh Road back to 2-way

Written by A. Cyclist

Monday, 24 January 2022 22:32 -



[www.lespremier.com](http://www.lespremier.com)